

Artikelnummer

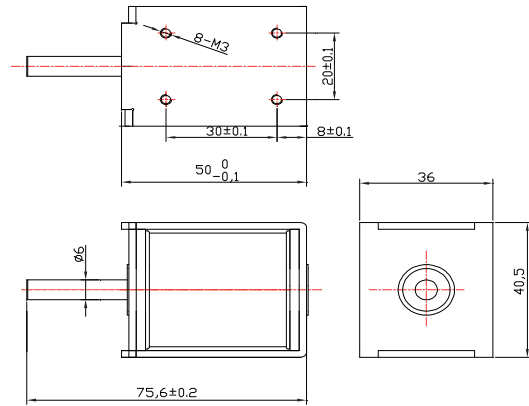
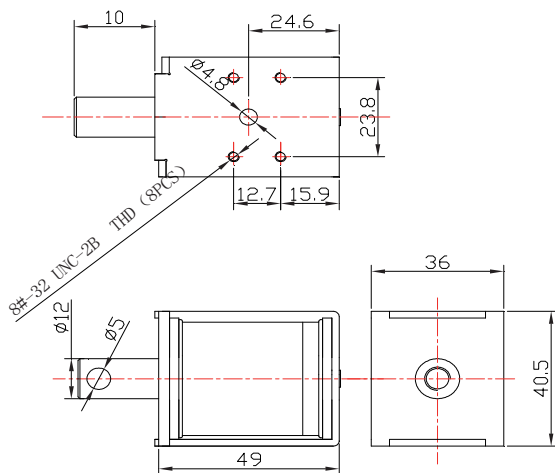
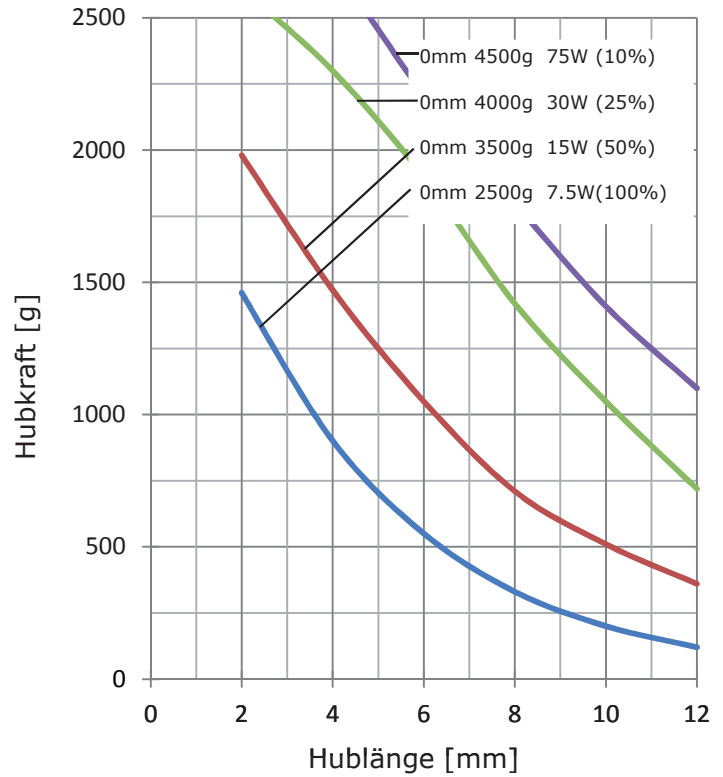
3	2		3		4	2
1	2	3	4	5	6	7

Spannung:

6 VDC	2
12 VDC	3
24 VDC	4
48 VDC	5

Ausführung:

ziehend	2
ziehend federrückgestellt	3
drückend	4
drückend federrückgestellt	5



Daten	ED = $\frac{\text{ON [sec]}}{\text{ON [sec] + OFF [sec]}} \times 100\%$	100%	50%	25%	10%
		continuous	intermitted		
	max. ON time [sec]	∞	140	50	9
	at 20°C [W]	7,5	15	30	75
	at 20°C [mA]	1200	1700	2400	3800
	Widerstand [Ω]	Spannung [VDC]			
	4,8	6	8,5	12	19
	19,2	12	17	24	38
	76,8	24	34	48	76
	307,2	48	68	96	152